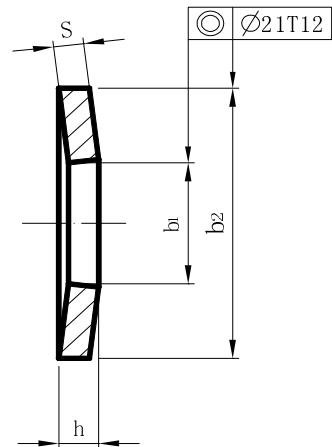
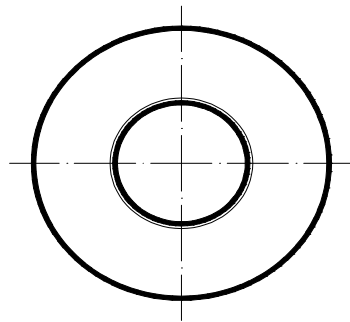


DIN 6796



Nominal size	$d_1$ H14	$d_2$ h14	s (3)	h max. 1)	h max. 2)	Mass (7.85 kg/dm <sup>3</sup> ) Per 1000 units, in kg, ≈	For thread size
2 <sup>4)</sup>	2.2	5	0.4	0.6	0.5	0.05	2
2.5 <sup>4)</sup>	2.7	6	0.5	0.72	0.61	0.09	2.5
3 <sup>4)</sup>	3.2	7	0.6	0.85	0.72	0.14	3
3.5 <sup>4)</sup>	3.7	8	0.8	1.06	0.92	0.25	3.5
4	4.3	9	1	1.3	1.12	0.38	4
5	5.3	11	1.2	1.55	1.35	0.69	5
6	6.4	14	1.5	2	1.7	1.43	6
7	7.4	17	1.75	2.3	2	2.53	7
8	8.4	18	2	2.6	2.24	3.13	8
10	10.5	23	2.5	3.2	2.8	6.45	10
12	13	29	3	3.95	3.43	12.4	12
14	15	35	3.5	4.85	4.04	21.8	14
16	17	39	4	5.25	4.58	30.4	16
18	19	42	4.5	5.8	5.08	38.9	18
20	21	45	5	6.4	5.6	48.8	20
22	23	49	5.5	7.05	6.15	63.5	22
24	25	56	6	7.75	6.77	92.9	24
27	28	60	6.5	8.35	7.3	113	27
30	31	70	7	9.2	8	170	30